

FLOAT CONTROL VALVE

Model: F8010

General Application:

For pressure, flow and level control in water applications.



WALTER series of automatic control valves are Basic Valves to provide hydraulically driven solutions to pressure, flow and level control applications.

Features:

- Top and seat ring guided stem and diaphragm assembly for long life and reliability.
 - All iron components are fusion epoxy bonded for corrosion resistance.
 - Easy maintenance without removal from the main line.
 - Nylon reinforced diaphragm for long term service.
 - Drip tight shut off.
 - Globe design for superior control characteristics.
 - Ductile iron bodies for higher strength and durability.
 - Corrosion resistant stainless steel seat and disc retainer ring.
 - Various pilots and accessories available for configuration into many different applications.
 - Special V-Port and double chamber are options, please consult factory.
 - Meet standards BS EN 1074-5, ISO 5208, BS EN 12266-1, BS EN 558-1,

Technical Data:

Size Range: DN50~DN800mm

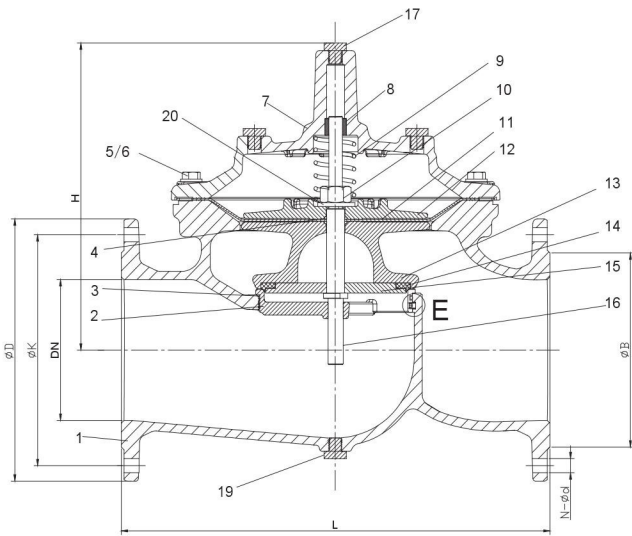
Pressure Ratings: 1.0Mpa; 1.6Mpa; 2.5Mpa

Working Temperature: -100C- 800C

Suitable Media: Water

End connection: PN 10/ PN 16/ PN 25

Consult Factory for other applications



No.	Description	Material	Standard
1	Body	Ductile Iron	GJS 500-7
2	Seat	Stainless Steel	AISI 304/316
3	O-ring	Rubber	NBR
4	O-ring	Rubber	NBR
5	Bolt	Stainless Steel	A2/A4
6	Washer	Stainless Steel	A2/A4
7	Bonnet	Ductile Iron	GJS 500-7
8	Bush	Bronze	C61900
9	Spring	Stainless Steel	AISI 304/316
10	Caulking Nut	Stainless Steel	A4
11	Diaphragm	Nylon Reinforced Rubber	EPDM +Nylon Fabric
12	Fixing holder	Ductile Iron	GJS 500-7
13	Disc Holder	Ductile Iron	GJS 500-7
14	Seal	Rubber	EPDM
15	Seat Retainer	Stainless Steel	AISI 304/316
16	Stem	Stainless Steel	AISI 304/316
17	Plug	Stainless Steel	AISI 304/316
18	Screw	Stainless Steel	A2/A4
19	Plug	Stainless Steel	A2/A4
20	Washer	Stainless Steel	A2/A4

Dimension:

DN	Model Code	L	ØD			ØK			H	N-Ød			ØB		
			PN10	PN16	PN25	PN10	PN16	PN25		PN10	PN16	PN25	PN10	PN16	PN25
50	A900-0050	230	165	165	165	125	125	125	177	4-Ø19	4-Ø19	4-Ø19	Ø99	Ø99	Ø99
65	A900-0065	290	185	185	185	145	145	145	202	4-Ø19	4-Ø19	8-Ø19	Ø118	Ø118	Ø118
80	A900-0080	310	200	200	200	160	160	160	219	8-Ø19	8-Ø19	8-Ø19	Ø132	Ø132	Ø132
100	A900-0100	350	220	220	235	180	180	190	243	8-Ø19	8-Ø19	8-Ø23	Ø156	Ø156	Ø156
*125	A900-0125	400	250	250	270	210	210	220	243	8-Ø19	8-Ø19	8-Ø28	Ø156	Ø156	Ø156
150	A900-0150	480	285	285	300	240	240	250	333	8-Ø23	8-Ø23	8-Ø28	Ø211	Ø211	Ø211
200	A900-0200	600	340	340	360	295	295	310	428	8-Ø23	12-Ø23	12-Ø28	Ø266	Ø266	Ø274
250	A900-0250	730	405	405	425	350	355	370	478	12-Ø23	12-Ø28	12-Ø31	Ø319	Ø319	Ø330
300	A900-0300	850	460	460	485	400	410	430	538	12-Ø23	12-Ø28	16-Ø31	Ø370	Ø370	Ø389
*350	A900-0350	980	520	520	555	460	470	490	550	16-Ø23	16-Ø28	16-Ø34	Ø429	Ø429	Ø448

Please consult factory for bigger size valves if necessary.